

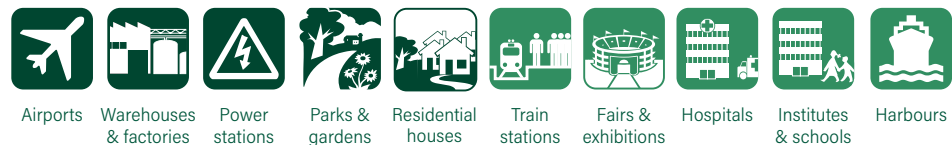


10
YEARS OF
GUARANTEE

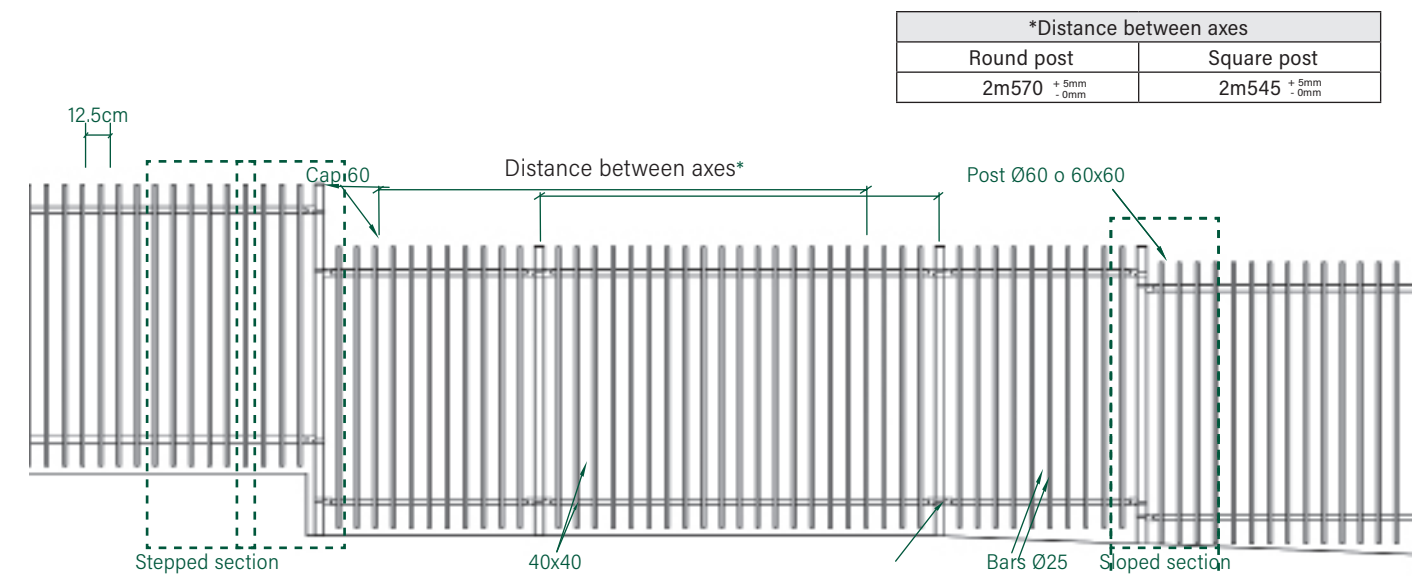
OUTSTANDING

- Design residential fence
- Frames that provide a certain level of privacy
- Quick and easy installation
- Indestructible security screw system
- Unique and versatile post/frame connection system

Application places



Assembly



THE STEPPED SECTION AND THE SLOPING SECTION

- Non-removable safety bolt system that offers a perfect technical solution with a high level of aesthetics.
- The strap model alone can provide changes in direction at different angles, slopes and stepped sections without the need for welds.
- On the stepped section and the sloping section, the longest post (normal length and step/drop) is placed on the lower part and fixed to the frames of both upper and lower sections.

Technical features

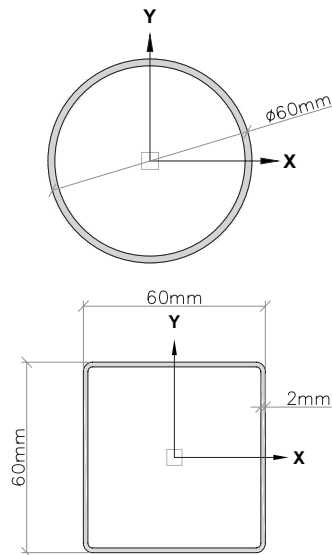
POSTS AND ACCESSORIES

- Steel sheet posts measuring Ø60x2mm, Ø60x3mm y 60x60x2mm according to the height
- Polypropylene cap resistant to atmospheric agents.

Detail of round post

Profile Ø60x2mm
 Profile weight: 2.86Kg/ml
 Galvanised sheet Z-275
 I/V= 5.11cm³

Profile Ø60x3mm
 Profile weight: 4.22Kg/ml
 Galvanised sheet Z-275
 I/V= 7.29cm³



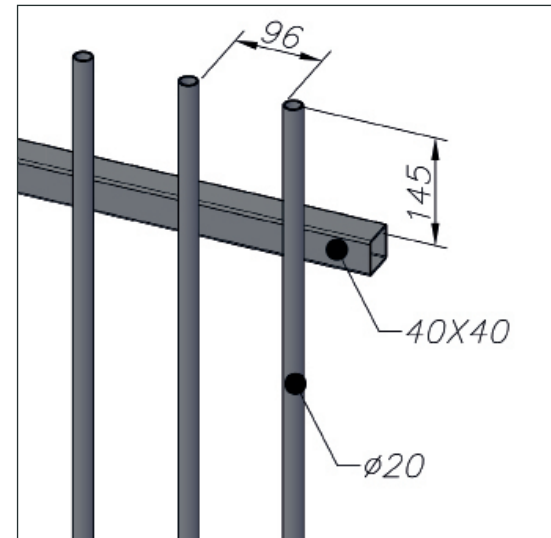
Detail of square post

Profile 3.56Kg/ml
 Galvanised sheet Z-275
 Thickness 2mm
 I/V= 8.38cm³

PANEL

- Frame made of 40x40x1.5mm profiles (horizontal) and round profile bars Ø25x1.5mm thick (vertical).
- Quick assembly without welding

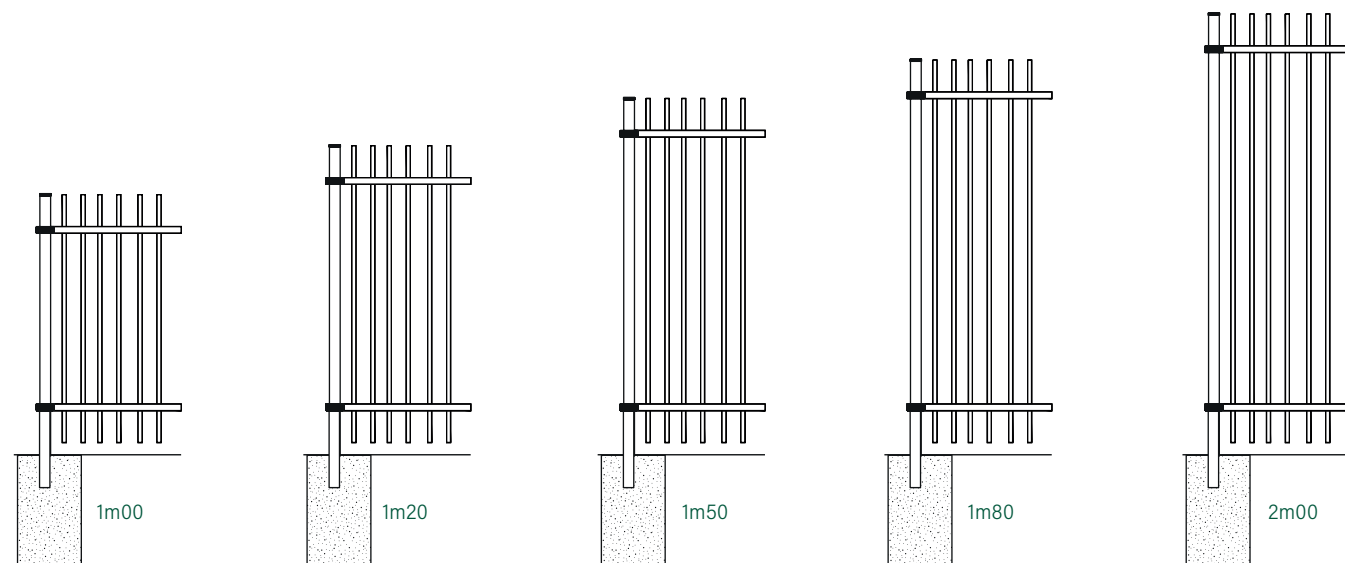
Panel detail



	PANEL		ROUND POST		SQUARE POST		LENGTH	
	LENGTH	TYPE	TYPE (mm)	DISTANCE BETWEEN POST AXES	TYPE (mm)	DISTANCE BETWEEN POST AXES	FOUNDATION	ON PLATE
1m00	2m480	1m00	Ø60x2	2m570 ^{+5mm} _{-0mm}	60x60x2	2m545 ^{+5mm} _{-0mm}	1m30	1m05
1m20		1m20					1m50	1m25
1m50		1m50					1m90	1m55
1m80		1m80	2m15				1m85	
2m00		2m00	Ø60x3				2m35	2m05

NOTE: For sections with more than 10 frames, it is advisable to readjust the interaxes so as not to accumulate errors in the measurement.

Finishes



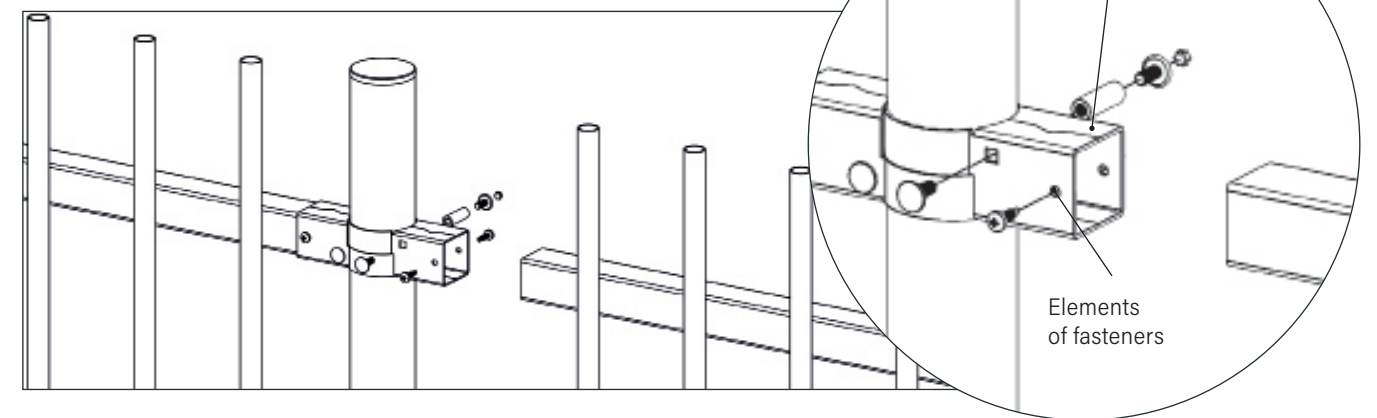
Round post

The connection between the post and the frame is made with 1.5mm thick sheet metal clamps, which offer a robust but discreet appearance.

ROUND POST CONNECTION SYSTEM APPLICATION	
APPLICATION	Ø60mm round posts
MATERIAL	Metal clamps made of 1.5mm thick galvanized sheet metal.
FINISHING	The clamps are plasticized with Rivisa's Protecline coating system and in the same color as the gate.
COMPOSITION	Clamp + Bolts and screws

UNITS PER POST	
INTERMEDIATE POSTS / ANGLE	4 pcs. post
EXTREME POSTS	2 pcs. post

INTERMEDIATE POST

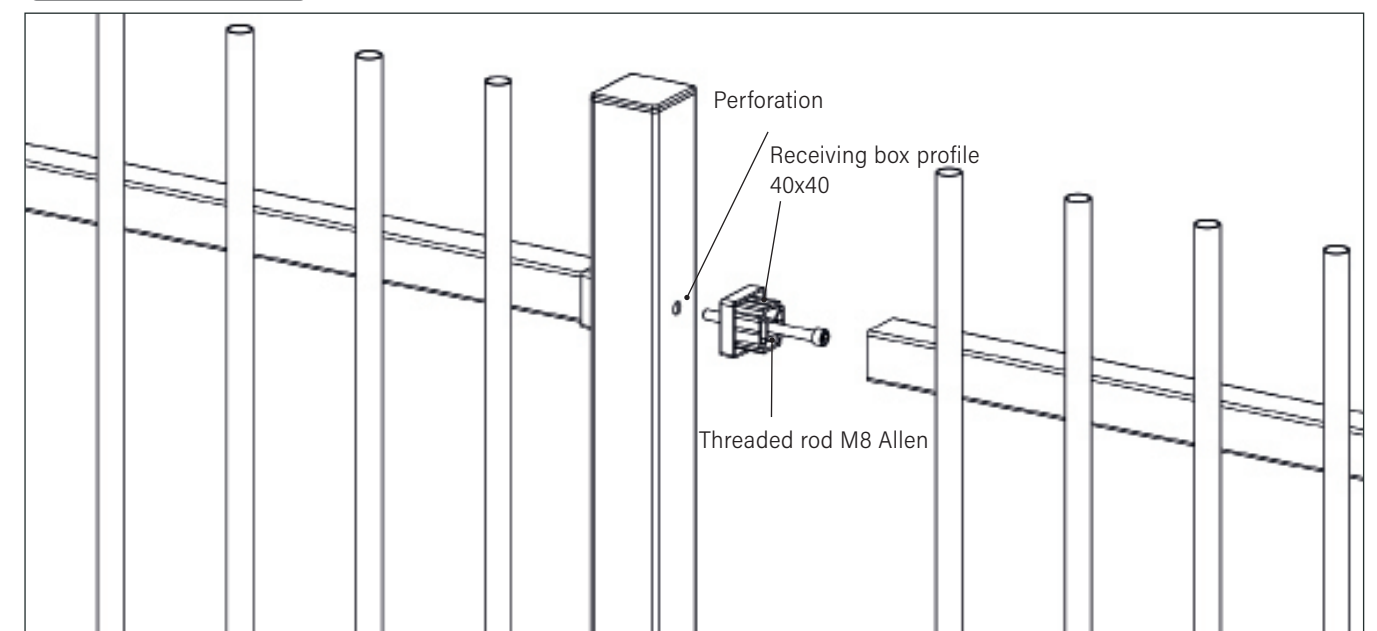


The connection between post and frame is made with high-strength plastic bushings.

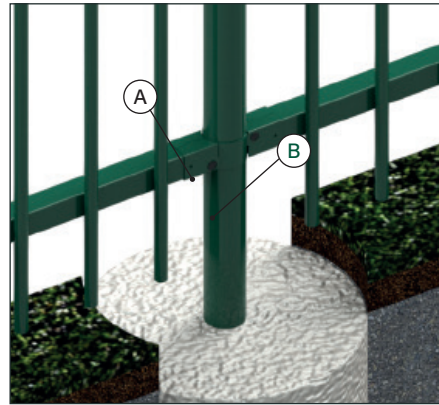
SQUARE POST CONNECTION SYSTEM	
APPLICATION	60x60mm square posts
MATERIAL	Sleeves manufactured in polypropylene
FINISHING	Polypropylene black colour
COMPOSITION	Bushing + M8 Screws + M8 Nut

INTERMEDIATE POSTS	
INTERMEDIATE POSTS	4 pcs. bushing + 2 pcs. screws
ANGLE POST	4 pcs. bushing + 4 pcs. screws
EXTREME POSTS	2 pcs. bushing + 2 pcs. screws

INTERMEDIATE POST



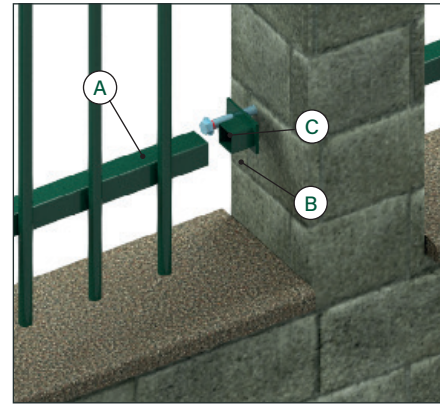
Anchoring systems



FOUNDATION

Post installation with concrete footings.

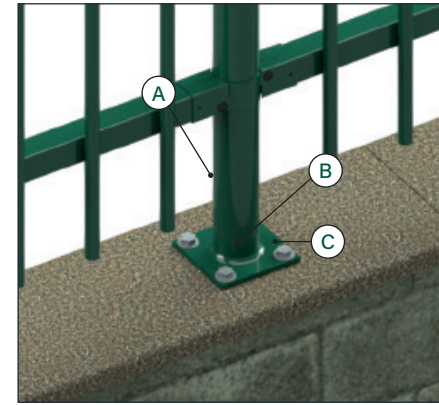
- A. Post
- B. Foundation



WIDTHR

Option of installing the fence with a side plate.

- A. Pantah fence frame
- B. Wall plate
- C. Anchor



BASE PLATE

Option of incorporating base plate to install the posts on concrete walls and gates with a height > 2m00. Dimensions of the plate 120x120x8mm.

- A. Post
- B. Wall plate
- C. Anchor

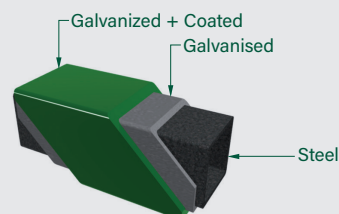
Anticorrosion coating

All the materials of system are hot dip galvanised and plastic coated with Rivisa® Protecline anticorrosion coating system.

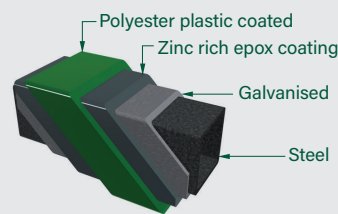
- Minimum thickness: 100 microns
- Option of applying the Rivisa® Protecline Plus plastic coating, which prolongs the useful life of the materials
- Option of applying the Rivisa® Protecline Plus triple plastic coating, which prolongs the useful life of the materials
- Available in several colours from the Rivisa RAL chart. Colours:



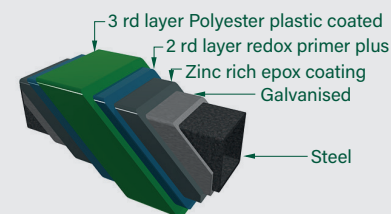
protecline



protecline PLUS

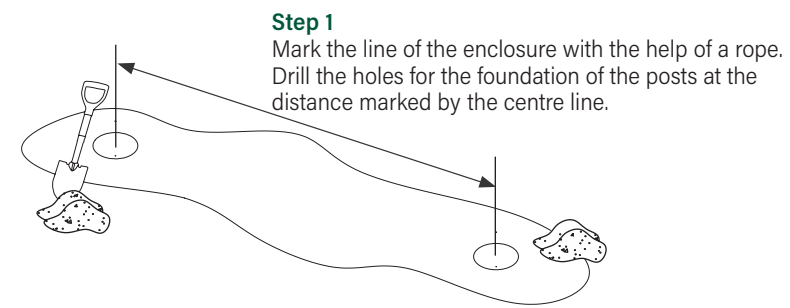


protecline TRIPLE



Assembly manual

Preparing the ground

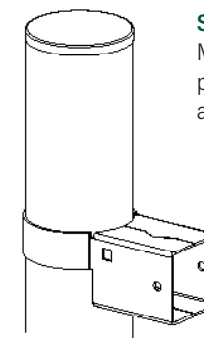


Step 1
Mark the line of the enclosure with the help of a rope. Drill the holes for the foundation of the posts at the distance marked by the centre line.

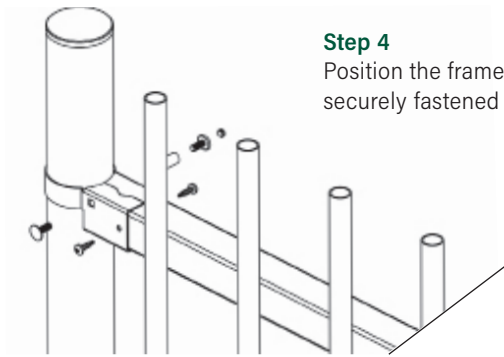


Step 2
Cement the first post and plumb it with the help of a level.

Post and clamp assembly

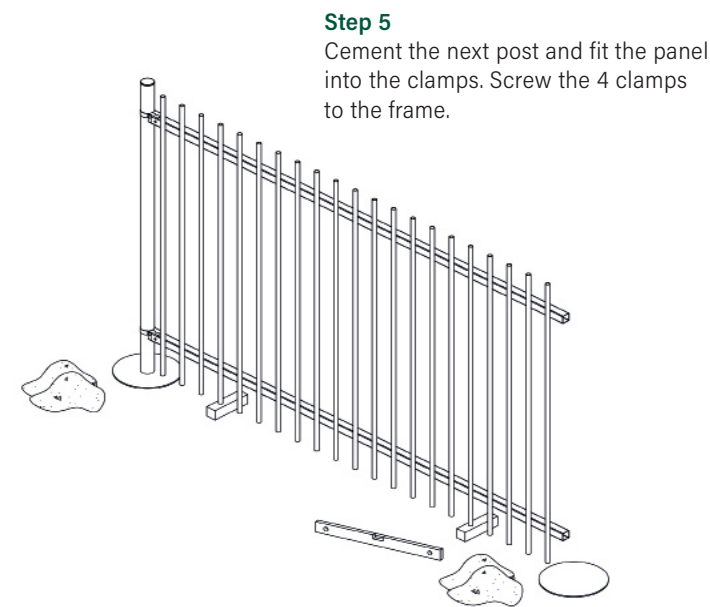


Step 3
Mount the metal clamp on the post (4 pcs. per intermediate post and 2 pcs. per end post).

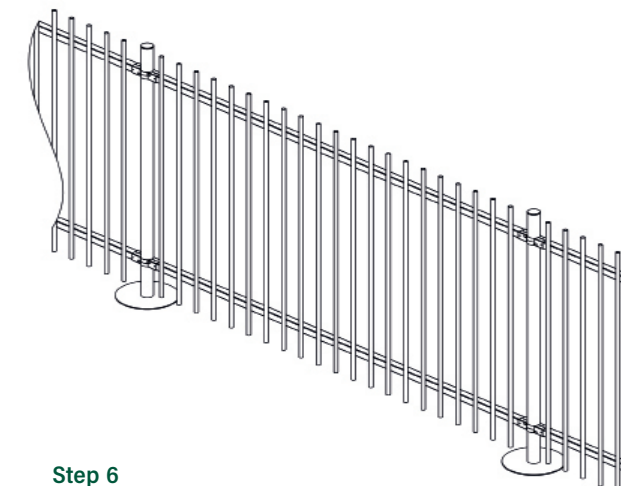


Step 4
Position the frame, making sure that it is securely fastened inside the clamps

Mounting the panels



Step 5
Cement the next post and fit the panel into the clamps. Screw the 4 clamps to the frame.



Step 6
Repeat the operation as many times as necessary. If base plate anchoring has been used instead of foundation anchoring, screw the base and insert the first post.

